



EAST KNOX LOCAL SCHOOLS

Facility Planning Committee Meeting #4
February 12, 2019



TODAY'S AGENDA

- Review Master Plan options
- Preliminary costs
- Group discussion



Timeline

Today

- **February 12th 6:30pm**
- March 12th 6:30pm
 - Community Forum dates to be determined

Possible Consensus by June 2019

Potential for a November 2019 bond issue

Conceptual Master Plan Options



Option 1

Renovation

- Renovate East Knox HS/JHS to OFCC level (7-12)
- No work at East Knox Elementary (PK-6)
- Plan does not include 3rd gym

Option 1: JHS/HS Renovation



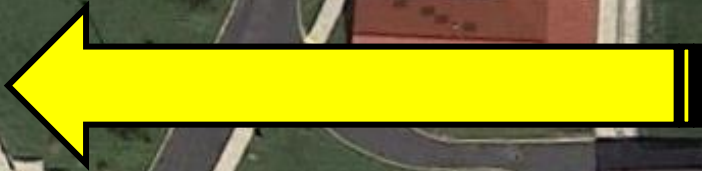
Option 1: JHS/HS Renovation

General Logistics

- 2-year construction period
- $\frac{1}{2}$ of students in temporary classrooms for each of 2 school years
- All school parking at Elementary
- Limited access for visitors
- All available site area taken up with modular classrooms and contractor laydown

Option 1: JHS/HS Renovation

* All JHS/HS parking and contractor parking at the Elementary



Modular Classroom location



Limited access for school drop-off only



Option 1: JHS/HS Renovation

* All JHS/HS parking and contractor parking at the Elementary



Demolish, build new Vo-Ag and expand parking



Option 1

Renovation

- Renovate East Knox HS/JHS to OFCC level (7-12)
- No work at East Knox Elementary (PK-6)
- Plan does not include 3rd gym

2018 costs

Total: \$14.5 million

Estimated 2019 cost*

\$15.6 million

** All costs are preliminary*

Option 2

PK-12 additions to east Knox Elementary

- Additions to convert East Knox Elementary to a PK-12
- Demolish all but 1994 portion of East Knox HS
- Button up 1994 portion to remain as a separate building
- Plan includes 3rd gym

Option 2: PK-12 Option



300 ft



Option 2: PK-12 Option

General Logistics

- 18-24 month construction period
- Limited parking available during construction
- Have to relocate playgrounds
- Major site areas taken up with contractor construction and laydown area



Option 2

Demolish existing Music Room to allow for new construction



Contractor area

300 ft



Option 2

Construction Area

Construction Area

Construction Area

Contractor area

Contractor area

300 ft



Option 2

- Add 7-12 to Elementary
- 69,000sf required



Corner is 15 ft. below existing grade

Retaining walls



Option 2

PK-12 additions to east Knox Elementary

- Additions to convert East Knox Elementary to a PK-12
- Demolish all but 1994 portion of East Knox HS
- Button up 1994 portion to remain as a separate building
- Plan includes 3rd gym

2018 costs

Total: \$20.0 million

Estimated 2019 cost*

\$21.6 million

** All costs are preliminary*

Option 3

New HS addition to EKHS

PK-8 additions to East Knox Elementary

- Additions to convert East Knox Elementary to a PK-8
- Demolish all but 1994 portion of East Knox HS
- HS in temporary classrooms for 2 school years
- Add High School wing onto existing 1994 wing
- Plan includes 3rd gym

Option 3: PK-8 + 9-12 Option



300 ft



Option 3: PK-8 + 9-12 Option

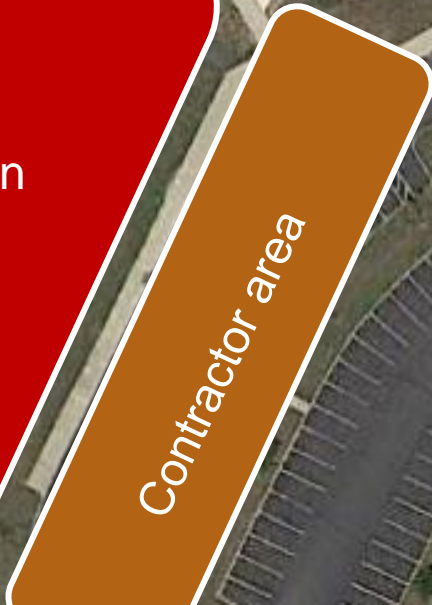
General Logistics

- Phased construction
- Build PK-8 in Phase 1
- Build 9-12 in Phase 2
- 42 – 48 month phase construction
- Limited parking available during construction
- Move HS to modular classrooms at Elementary during 9-12 construction



Option 3 : Phase 1

- Add 6-8 Wing
- During Construction

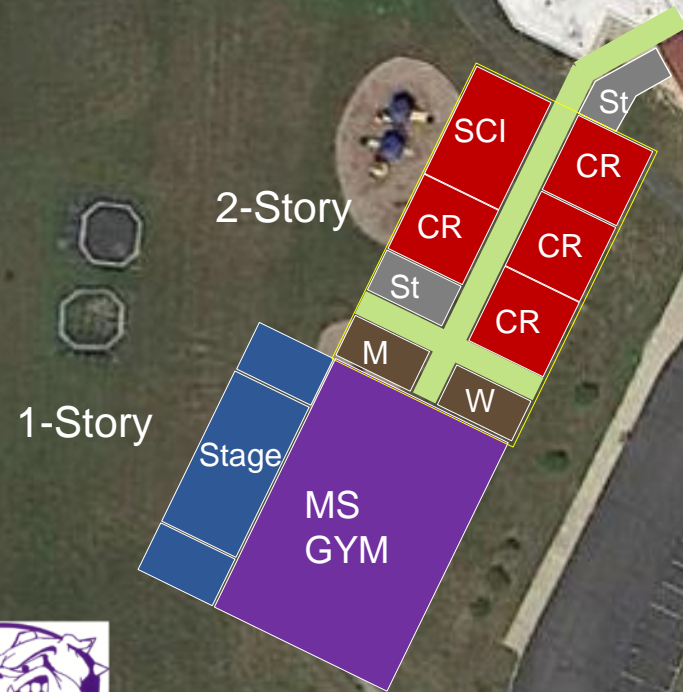


300 ft



Option 3 : Phase 1

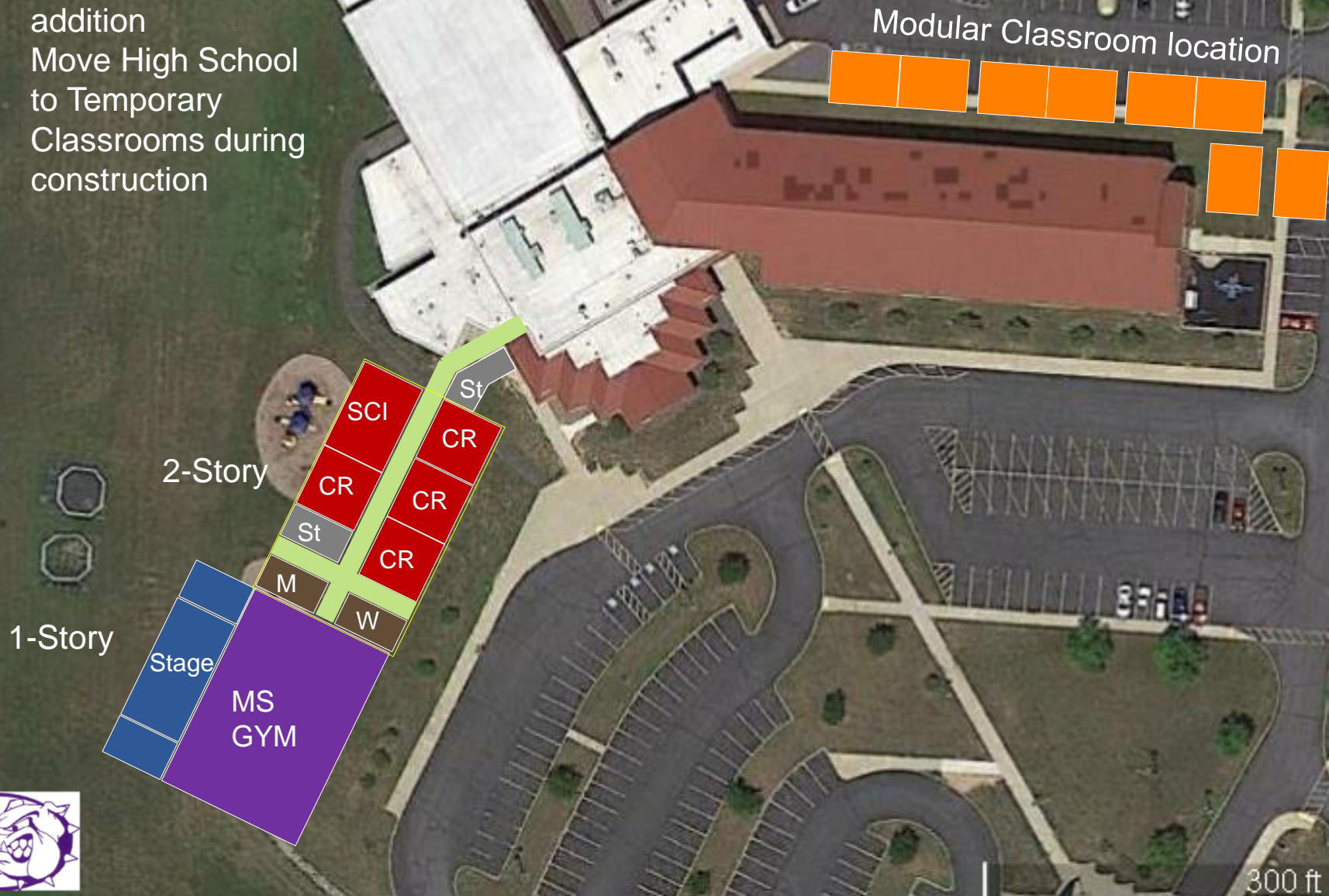
- Add 6-8 wing
- 2 story classroom addition
 - MS gym
 - Optional stage



300 ft

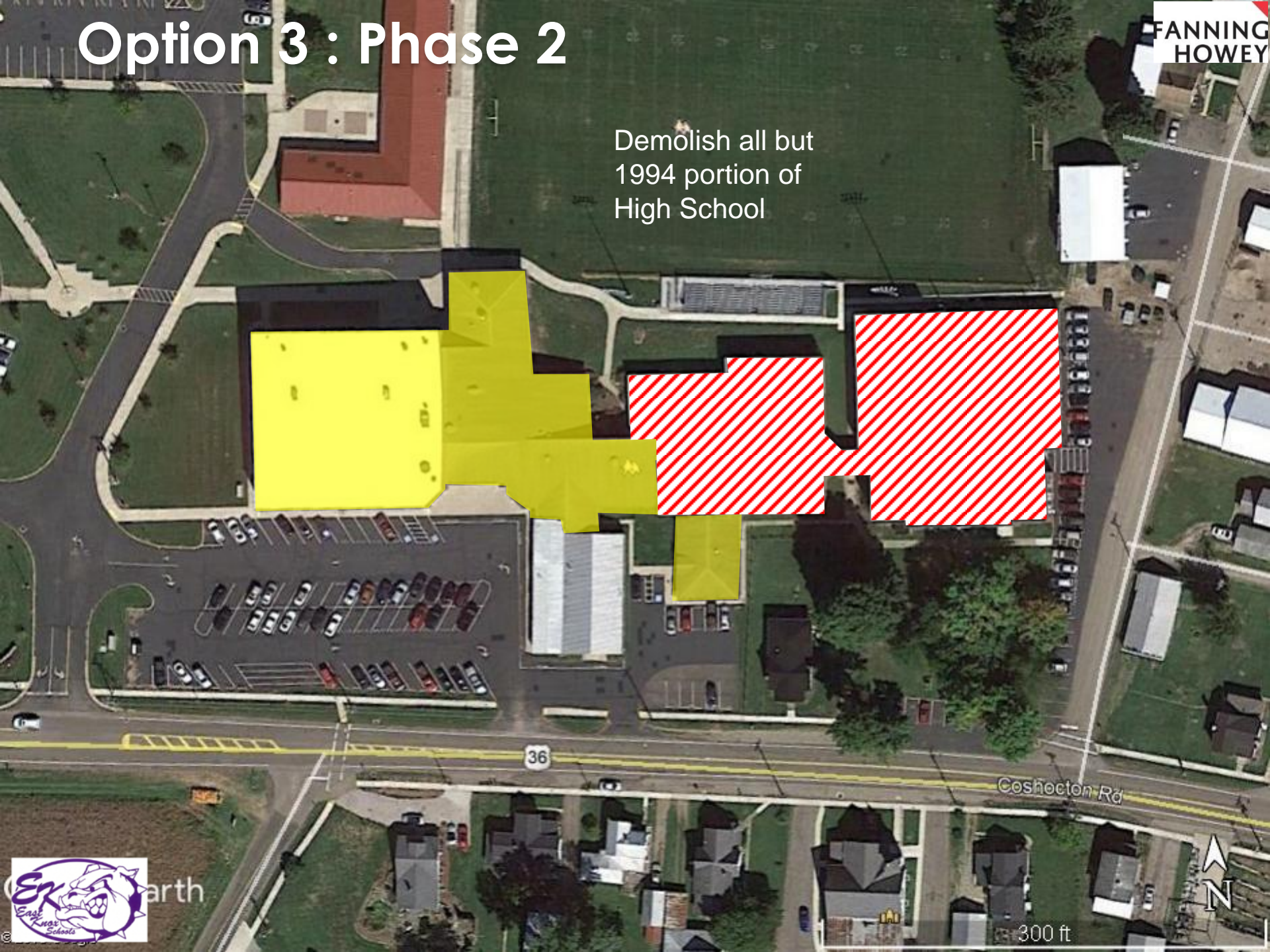
Option 3 : Phase 2

- JHS occupies new addition
- Move High School to Temporary Classrooms during construction



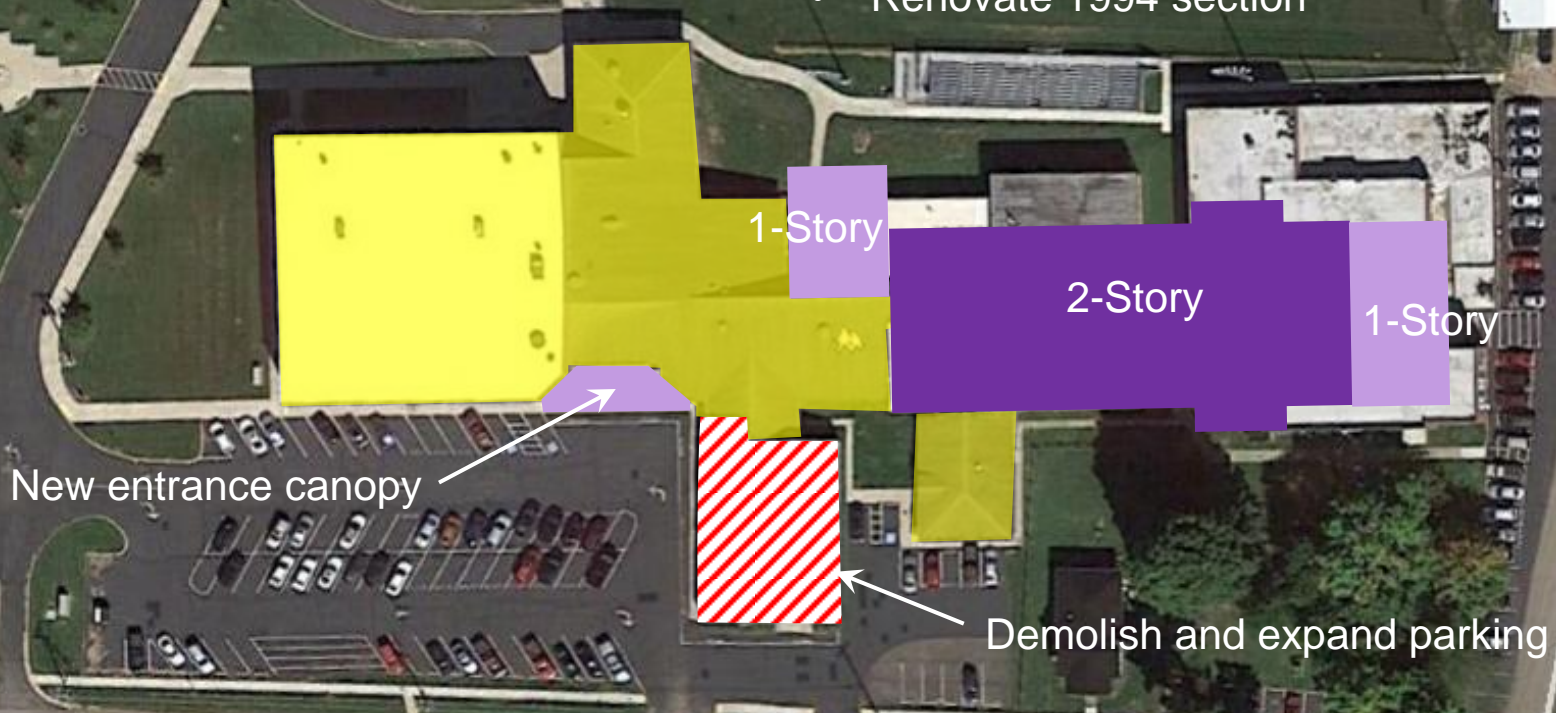
Option 3 : Phase 2

Demolish all but
1994 portion of
High School



Option 3 : Phase 2

- Construct new High School addition onto 1994 section
- Renovate 1994 section



Option 3

New HS addition to EKHS

PK-8 additions to East Knox Elementary

- Additions to convert East Knox Elementary to a PK-8
- Demolish all but 1994 portion of East Knox HS
- HS in temporary classrooms for 2 school years
- Add High School wing onto existing 1994 wing
- Plan includes 3rd gym

2018 costs

Total: \$17.5 million

Estimated 2019 cost*

\$18.9 million

** All costs are preliminary*

Option 4

New 6-12 addition to EKHS

East Knox Elementary becomes PK-5

- East Knox as PK-5 : no work
- Demolish all but 1994 portion of East Knox HS
- JHS and HS in temporary classrooms for 2 school years
- Add JHS and HS wing onto existing 1994 wing
 - Likely this would need to be a 3-story wing
 - Plan does not include 3rd gym

Option 4: PK-5 + 6-12 option



Option 4: PK-5 + 6-12 option

General Logistics

- 2-year construction period
- All students in temporary classrooms for 2 school years at Elementary School
- All school parking at Elementary
- Limited access for visitors
- All available site area taken up with contractor laydown



Option 4

- Demolish Existing older sections
- All HS and JHS students in temporary classrooms at Elementary

Contractor area

Limited access for school drop-off only



Contractor area



Option 4

Temporary
Classrooms for
Junior and
Senior High
School during
construction

Modular Classroom location



Modular
Classroom
location



300 ft



Option 4

- Construct new 6-12 School addition onto 1994 section
- Renovate 1994 section

- 2-story classroom addition

May infringe on U.S. 36 building setback

New entrance canopy

1-Story

2-Story

1-Story

Demolish, build new Vo-Ag and expand parking

36

Coshocton Rd



300 ft

FANNING
HOWEY

Option 4

- Construct new 6-12 School addition onto 1994 section
- Renovate 1994 section

- 3-story classroom addition

- Construct new 6-12 School addition onto 1994 section
- Renovate 1994 section

New entrance canopy

1-Story

3-Story

1-Story

Demolish, build new Vo-Ag and expand parking

36

Coshocton Rd



300 ft



FANNING
HOWEY

Option 4

New 6-12 addition to EKHS

East Knox Elementary becomes PK-5

- East Knox as PK-5 : no work
- Demolish all but 1994 portion of East Knox HS
- JHS and HS in temporary classrooms for 2 school years
- Add JHS and HS wing onto existing 1994 wing
 - Likely this would need to be a 3-story wing
 - Plan does not include 3rd gym

2018 costs

Total: \$15.3 million

Estimated 2019 cost*

\$16.5 million

** All costs are preliminary*

Rough project cost figures

<u>Project size</u>	<u>millage</u>	<u>\$/year</u>
\$16 million project	3.0 – 3.3 mills	\$105-\$116
\$18 million project	3.3 – 3.7 mills	\$116-\$130
\$20 million project	3.8 – 4.2 mills	\$133-\$147
\$22 million project	4.2 – 4.7 mills	\$147-\$165
\$24 million project	4.6 – 5.1 mills	\$165-\$179

Notes:

Assumes all property tax

5.25% interest rate

30-37 year bond term

Cost per year is per \$100,000 valuation

+ more on the radius!

Enhancements (LFI's) ala carte*

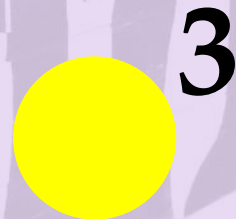
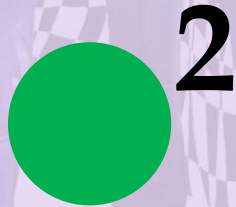
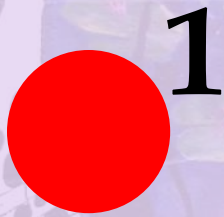
- Stage addition \$ 450,000 - 750,000
- Others?

*Notes:

Cost for metal roof (if relevant to the plan) has already been factored into the basic master plan costs

Group Discussion

- Pros/Cons of each plan



Next Steps

- **March 12th 6:30pm**
 - Community Forum dates to be determined
 - Community Survey?

Possible Consensus by June 2019

Potential for a November 2019 bond issue